



INFRASTRUCTURE

Developments reflect nation's coming of age



SCENIC VIEW: The cable car ride in Langkawi.

KL Monorail, which begins operations today, heralds Malaysia's arrival as one of the world's most progressive nations. Together with other infrastructure developments, they reflect the nation's coming of age, writes **SABARIAH SALLEH**.

MALAYSIA has indeed gone through a lot of changes to get to where it is today. A lot of new facilities and infrastructure have been developed to help improve our quality of life.

From hi-tech airport to an extensive range of mode of transportation, the country has strived to fulfil the needs of its people.

Take for example the KL Monorail. A new mode of transportation in the city, the KL Monorail is designed to complement and integrate with Kuala Lumpur's existing and planned urban transportation system.

The 8.6km long monorail system begins from Jalan Tun Razak and terminates at KL Sentral in Brickfields via the central business district of Kuala Lumpur.

Also, the system is made-in-Malaysia and contains 70 per cent local content.

The monorail begins operation today (Aug 31), so why not take the opportunity to be amongst the first go for a ride?

Tickets for the Monorail service for 11 stations are priced at RM1.20, RM1.60, RM2.10 and RM2.50. The stations are Titivangsa, Chow Kit, Medan Tuanku, Bukit Nanas, Raja Chulan, Bukit Bintang, Imbi, Hang Tuah, Maharajalela, Tun Sambanthan and KL Sentral.

As for beating the traffic, road users in KL can look out for new routes to go places. Kumpulan Guthrie Berhad has undertaken to construct the Guthrie Corridor Expressway (GCE), a six-lane privatised highway which runs 25km from Bukit Jelutong, Shah Alam to Kuang near Rawang.

Earthworks for the GCE has commenced early last year and is expected to be completed by early next year.

The expressway has nine interchanges on the mainline and two for connections to existing roads. These features will provide road users with fast and direct accessibility to the currently less accessible Shah Alam-Rawang corridor.

Also, it converges with either existing or proposed highways including the North-South Expressway, Klang Valley Expressway, Shah Alam Expressway and the KL Outer Ring Road.



SMOOTH RIDE: One of many highways in Malaysia.

The GCE boasts the highest highway design standards with a 5m central-median complete with motorcycle lanes and two rest service areas.

Meanwhile, in an effort to bridge the digital divide between rural and urban communities, the government will be offering community Internet classes at 40 post offices in rural areas.

Rural folk will get a chance to discover the worldwide web in the enhanced programme which was planned from an existing Internet Desa programme.

It ensures that participants at the selected sites can generate their own content rather than merely use the Internet passively.

Each post office will be expanded to house a computer room where classes will be conducted. These post offices will be supplied with at least five computers.

Pos Malaysia Bhd will spend about RM2 million on the project.

Currently, there are three test sites; Kota Marudu, Sabah; Bau, Sarawak; and Sungai Air Tawar, Selangor. The 40 new sites will bring the number of Internet Desa sites to 56 by year end.

Other infrastructure planned is the airport in Pulau Tioman. Those keen on travelling can expect a new airport capable of handling aircraft the size of Boeing 737s within the next two years on the island.

To be located in Kampung Paya, about 10 minutes drive from the five-

star Berjaya Tioman Beach Resort, the airport will have an exquisite feature in that its runway will be built on the sea.

The RM150 million new airport would also be the new growth centre on the popular island resort which is described as one of the 10 most beautiful islands in the world.

Meanwhile, travellers to Langkawi will now get to enjoy a cable car ride up to the top of Mount Machinchang, from the Oriental Village.

The stunning ride at a height of 708m in Burau Bay, will enable visitors to have complete view of the Langkawi group of islands and even further to the southern Thai islands and Satun province coastline.

The Austrian monicable system of six-seater gondolas can ferry 700 passengers to the mountain in an hour.

On the way up, the scenery of the 550-million-year-old mountain range unfolds showing the 4,167-ha of virgin jungle of the forest reserve and Telaga Tujuh falls, quite a feast for the eyes. The ride is priced at RM15 (return fare).

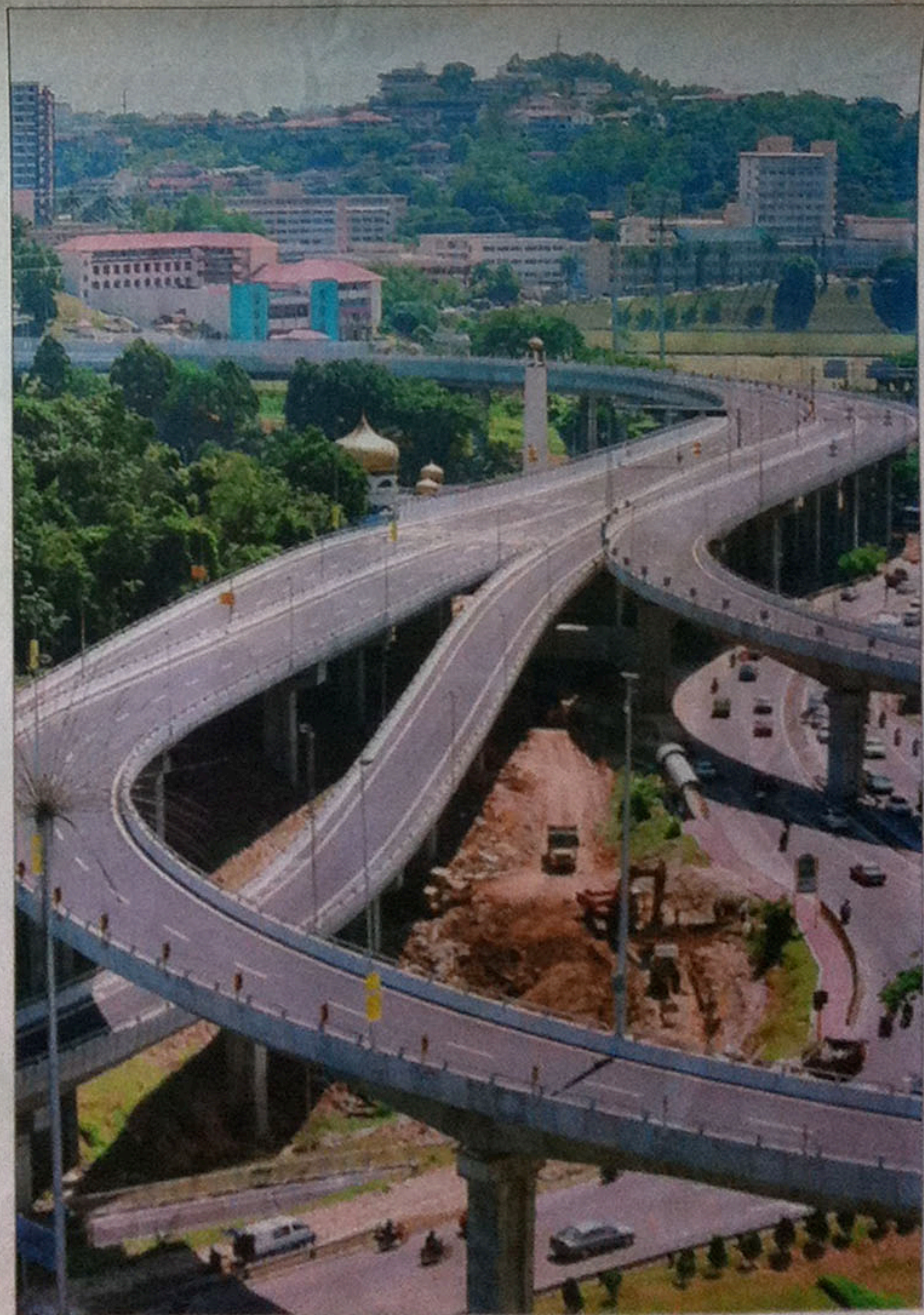
All these exciting facilities and useful infrastructure are made with Malaysians in mind.

It is something we should be proud of and not taken for granted. After all, these things not only help improve our lives it also help put our country on the map.

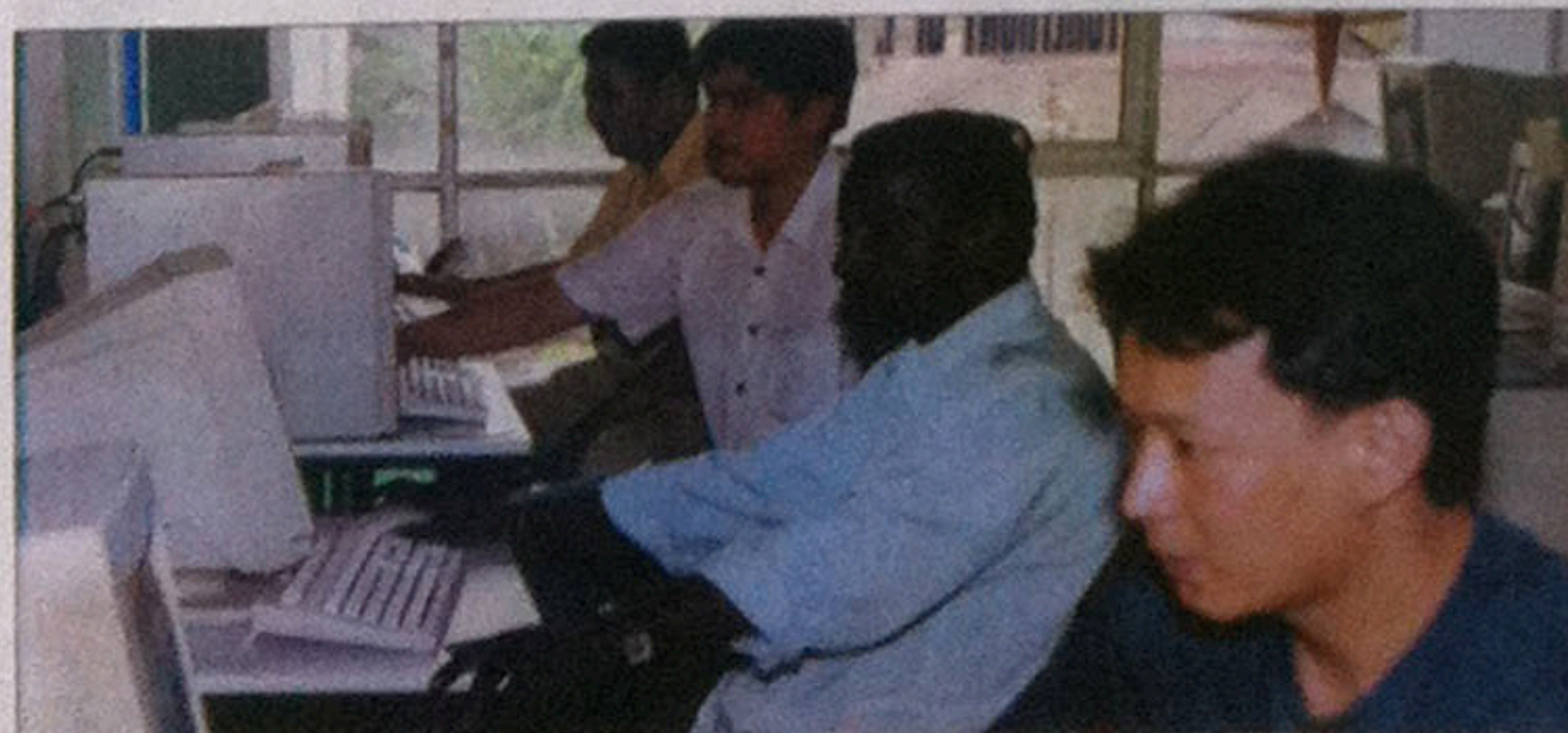
■ sabariah@nstp.com.my



MODERN TRANSPORTATION: The Monorail service for commuters.



WELL CONNECTED: The Kerbuchi Link is a welcome relief for Klang Valley motorists.



COMPUTER LITERATE: Moving towards an IT-friendly society.